



**GENERAL KEY**

GREY REPRESENTS EXISTING  
 BLACK REPRESENTS PROPOSED

-  PARKING BAY TO BE SUSPENDED
-  TEMPORARY WATER FILLED LEGO BLOCKS BARRIER WITH FENCE TOP

This map is reproduced from or based upon Ordnance Survey material with the permission of Ordnance Survey on behalf of the Controller of Her Majesty's Stationery Office (© Crown copyright). Unauthorised reproduction infringes Crown Copyright and may lead to prosecution or civil proceedings. London Borough of Harrow 1000118506.



**COMMUNITY DIRECTORATE**  
 TRAFFIC, HIGHWAYS & ASSET MANAGEMENT

P.O. Box 39, Civic Centre,  
 Harrow, Middlesex, HA1 2XA  
 Tel: 020 8863 5611  
 Fax: 020 8424 1040

Issued for: **INFORMATION**

Revision	Details of Revision	Date	Initial
A	FOR INFORMATION	09/06/20	VK
B	FOR INFORMATION	10/06/20	VK

Project Title  
**LONDON STREETSPACE PROGRAMME  
 SPACE AT TOWN CENTRE**

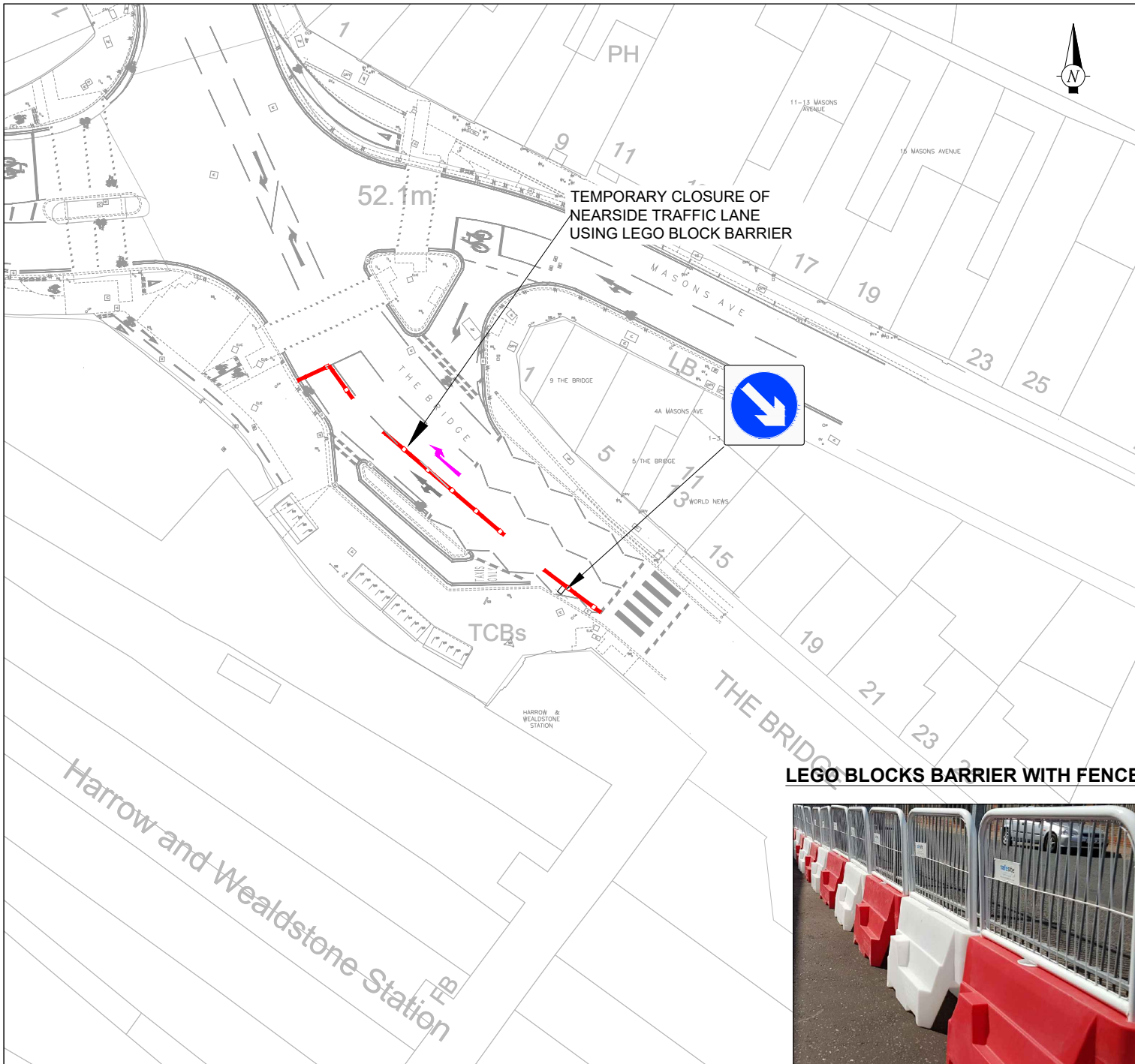
Drawing Title  
**STATION ROAD, HARROW  
 SHOPPING PARADE AND MOSQUE  
 TEMPORARY FOOTWAY WIDENING**

Scale NTS	Drawn VK	Checked JA
	Date 09/06/2020	

Drawing No.  
**T/DWG/STATION ROAD**

Revision  
**B**

Acad file Location  
 C:\Harrow Traffic Scheme 2020\Transition programme\TPR0240\_PSD\DWG\PS\_Proposed Layout.dwg



**GENERAL KEY**

- GREY REPRESENTS EXISTING
- BLACK REPRESENTS PROPOSED
- MAGENTA REPRESENTS REMOVAL

TEMPORARY WATER FILLED LEGO BLOCKS BARRIER WITH FENCE TOP

This map is reproduced from or based upon Ordnance Survey material with the permission of Ordnance Survey on behalf of the Controller of Her Majesty's Stationery Office (c) Crown copyright. Unauthorised reproduction infringes Crown Copyright and may lead to prosecution or civil proceedings. London Borough of Harrow 1000119206.



**COMMUNITY DIRECTORATE**  
TRAFFIC, HIGHWAYS & ASSET MANAGEMENT

P.O. Box 39, Civic Centre,  
Harrow, Middlesex. HA1 2XA  
Tel: 020 8863 5611  
Fax: 020 8424 1040

Issued for: **INFORMATION**

Revision	Details of Revision	Date	Initial
A	FOR INFORMATION	09/06/20	VK

Project Title  
**LONDON STREETSPACE PROGRAMME  
SPACE AT TOWN CENTRE**

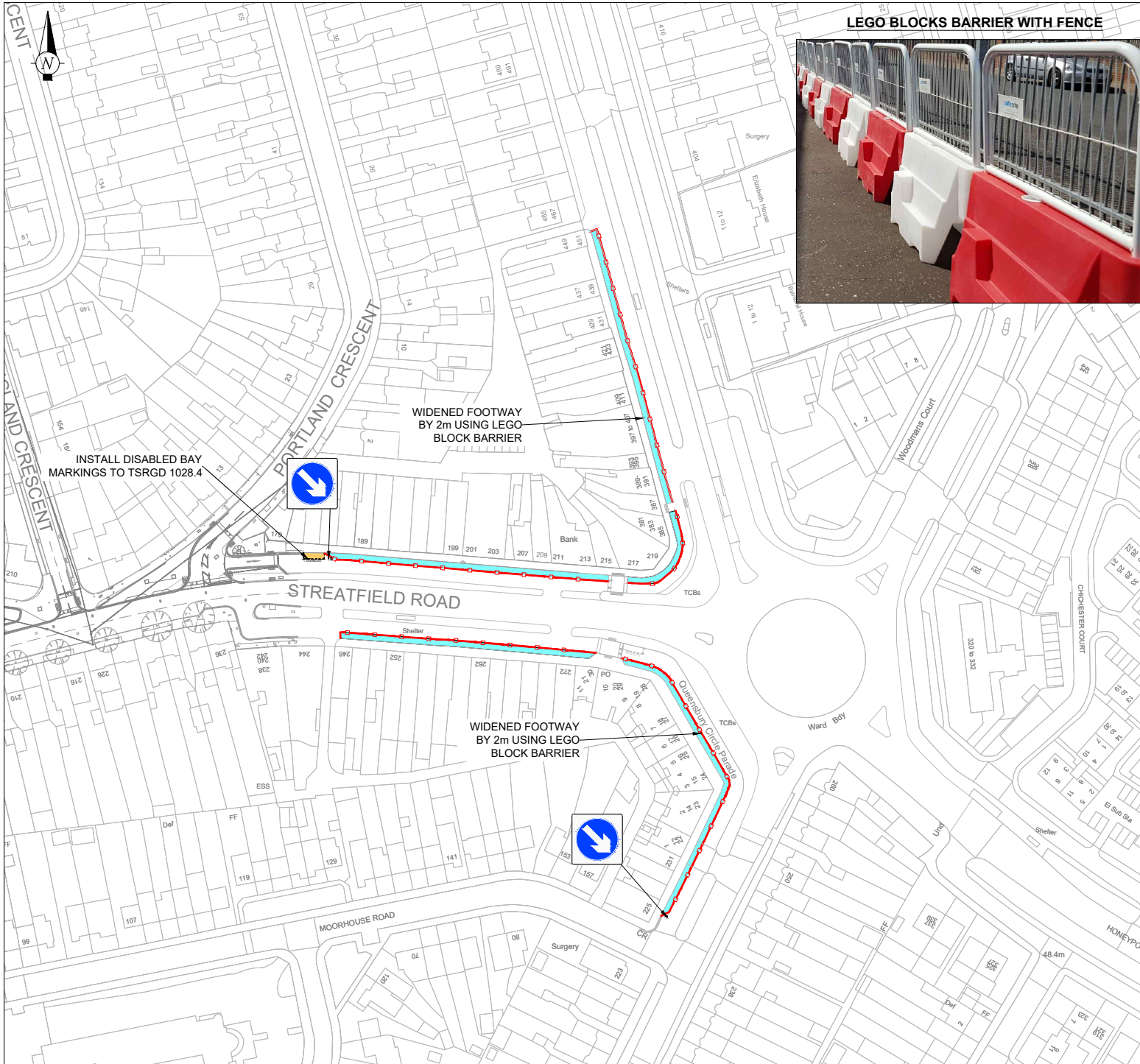
Drawing Title  
**HARROW AND WEALD STATION  
TRAFFIC LANE CLOSURE  
TEMPORARY FOOTWAY WIDENING**

Scale NTS	Drawn VK	Checked JA
	Date 09/06/2020	

Drawing No. <b>T/DWG/HARROW &amp; WEALD STATION</b>	Revision <b>A</b>
--	----------------------

Acad file Location  
C:\Harrow Traffic Scheme 2020\Transition programme\PS-01 Station Road\_os\_mosque\PS\_ALL new.dwg





LEGO BLOCKS BARRIER WITH FENCE



**GENERAL KEY**

- GREY REPRESENTS EXISTING
- BLACK REPRESENTS PROPOSED
- TEMPORARY FOOTWAY WIDENING AREA
- TEMPORARY WATER FILLED LEGO BLOCKS BARRIER WITH FENCE TOP

This map is reproduced from or based upon Ordnance Survey material with the permission of Ordnance Survey on behalf of the Controller of Her Majesty's Stationary Office (c) Crown copyright. Unauthorised reproduction infringes Crown Copyright and may lead to prosecution or civil proceedings. London Borough of Harrow 1000119206.



**COMMUNITY DIRECTORATE**  
**TRAFFIC, HIGHWAYS & ASSET MANAGEMENT**

P.O. Box 39, Civic Centre,  
 Harrow, Middlesex. HA1 2XA  
 Tel: 020 8863 5611  
 Fax: 020 8424 1040

Issued for: INFORMATION		Revision	Details of Revision	Date	Initial
		A	FOR INFORMATION	19/06/20	VK

Project Title  
**LONDON STREETSPACE PROGRAMME**  
**TOWN CENTRE PEDESTRIAN SPACE**

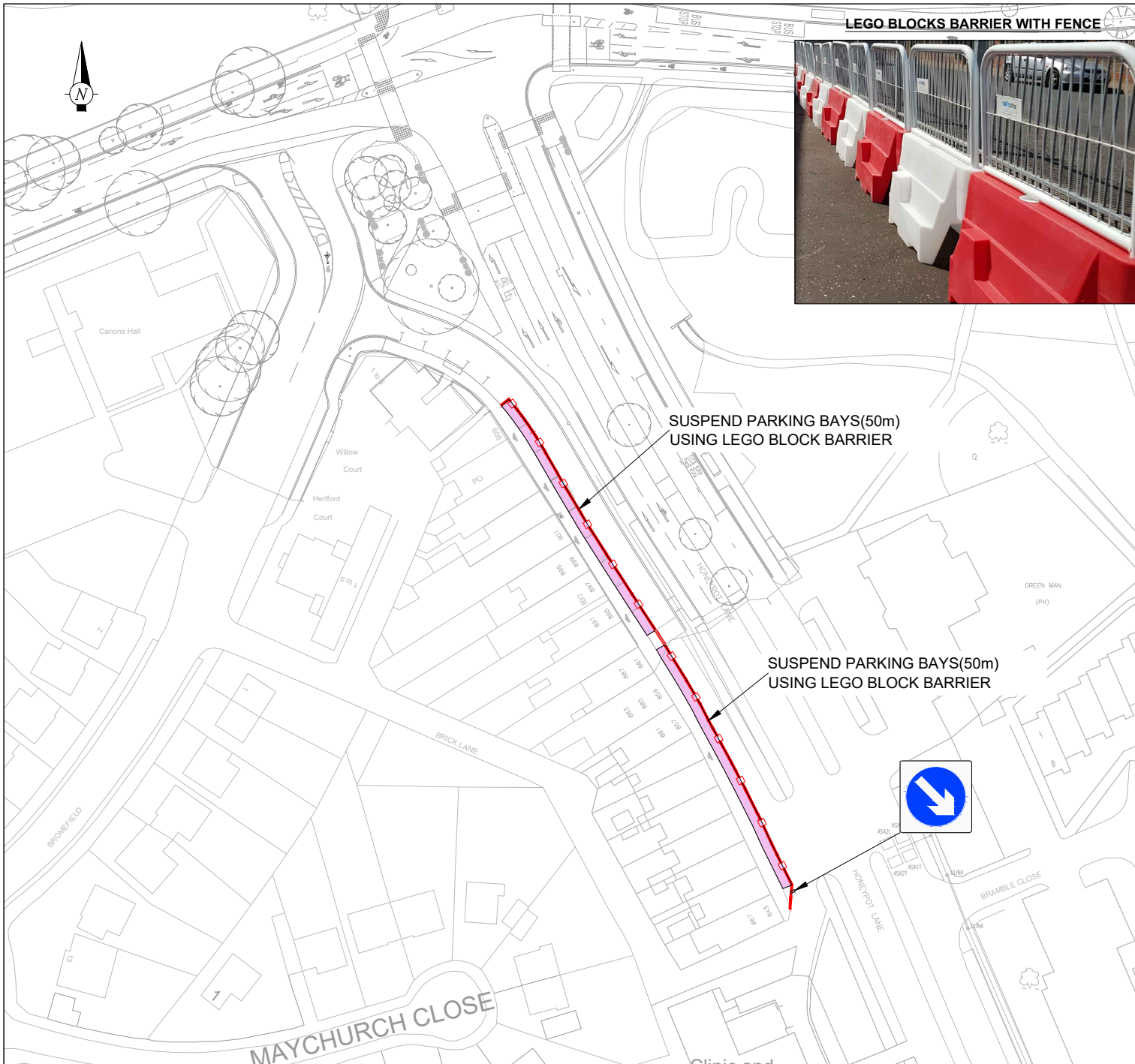
Drawing Title  
**STREATFIELD ROAD (HONEYPOT LANE )**  
**SERVICE ROADS - SHOPPING PARADE**  
**TEMPORARY FOOTWAY WIDENING**

Scale NTS	Drawn VK	Checked JA
	Date 19/06/2020	

Drawing No. T/DWG/STREATFIELD ROAD PS-07	Revision A
---	---------------



Acad file Location  
 C:\Harrow Traffic Scheme 2020\Transition programme\TPR0240\_PS\DWG\PS-07\_Streatfield Road.dwg





**GENERAL KEY**

GREY REPRESENTS EXISTING  
 BLACK REPRESENTS PROPOSED

-  PARKING BAY TO BE SUSPENDED
-  TEMPORARY WATER FILLED LEGO BLOCKS BARRIER WITH FENCE TOP

This map is reproduced from or based upon Ordnance Survey material with the permission of Ordnance Survey on behalf of the Controller of Her Majesty's Stationery Office (c) Crown copyright. Unauthorised reproduction infringes Crown Copyright and may lead to prosecution or civil proceedings. London Borough of Harrow 10001/10200.



**COMMUNITY DIRECTORATE**  
 TRAFFIC, HIGHWAYS & ASSET MANAGEMENT

P.O. Box 39, Civic Centre,  
 Harrow, Middlesex. HA1 2XA  
 Tel: 020 8863 5611  
 Fax: 020 8424 1040

Issued for: **INFORMATION**

Revision	Details of Revision	Date	Initial
A	FOR INFORMATION	19/06/20	VK

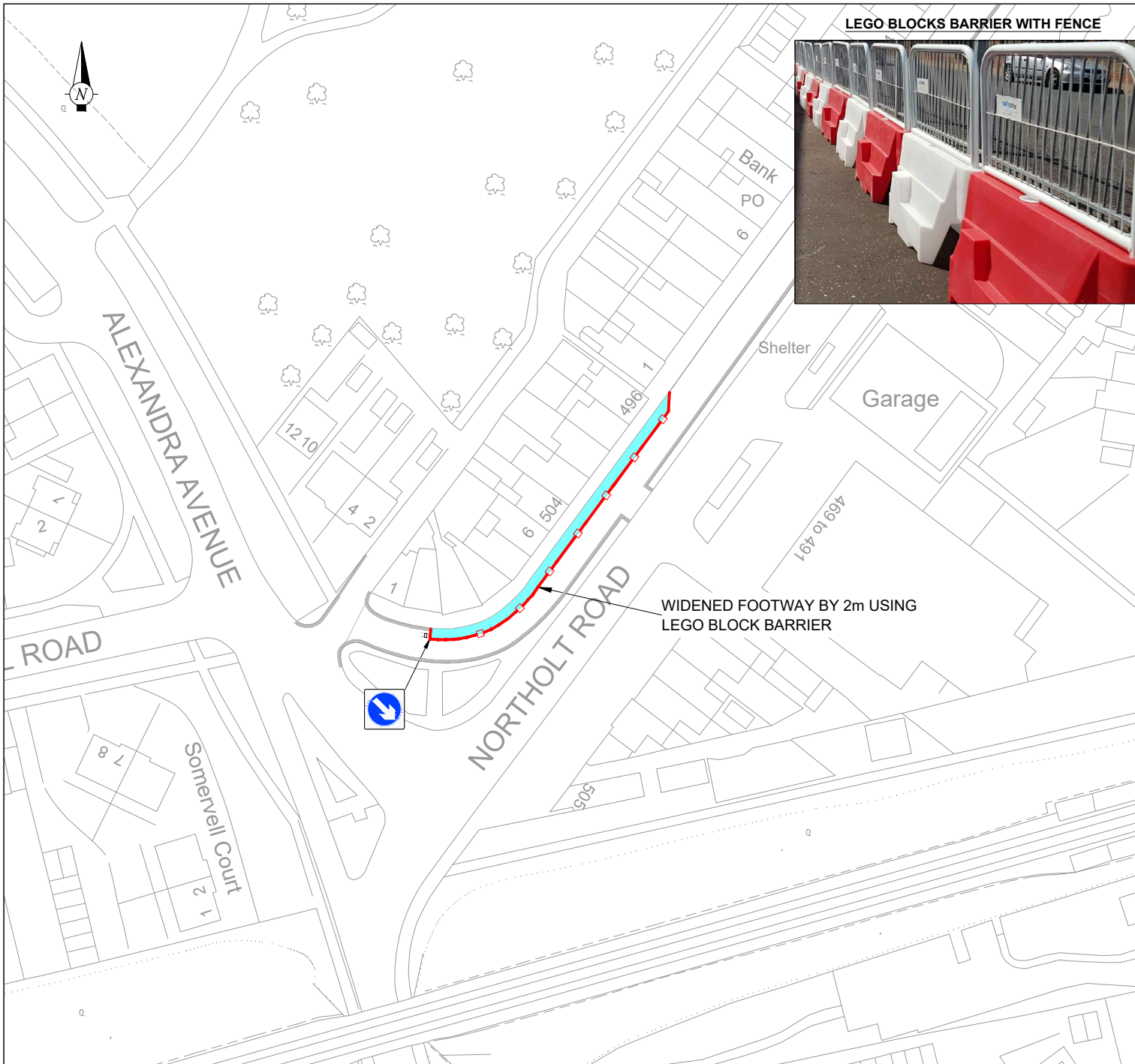
Project Title  
**LONDON STREETSPACE PROGRAMME  
 TOWN CENTRE PEDESTRIAN SPACE**

Drawing Title  
**HONEYPOT LANE SERVICE ROAD  
 NEAR WEMBOROUGH ROAD SHOPPING PARADE  
 TEMPORARY FOOTWAY WIDENING**



Scale NTS	Drawn VK	Checked JA
	Date 19/06/2020	

Drawing No. <b>T/DWG/HONEYPOT LANE SERVICE ROAD</b>	Revision <b>A</b>
--	----------------------

Acad file Location  
 C:\Harrow Traffic Scheme 2020\Transition programme\TPR0240\_PSD\DWG\PS-06.dwg



**GENERAL KEY**

- GREY REPRESENTS EXISTING
- BLACK REPRESENTS PROPOSED
-  TEMPORARY FOOTWAY WIDENING AREA
-  TEMPORARY WATER FILLED LEGO BLOCKS BARRIER WITH FENCE TOP

This map is reproduced from or based upon Ordnance Survey material with the permission of Ordnance Survey on behalf of the Controller of Her Majesty's Stationery Office (c) Crown copyright. Unauthorised reproduction infringes Crown Copyright and may lead to prosecution or civil proceedings. London Borough of Harrow 1000119206.



**COMMUNITY DIRECTORATE**  
**TRAFFIC, HIGHWAYS & ASSET MANAGEMENT**

P.O. Box 39, Civic Centre,  
 Harrow, Middlesex. HA1 2XA  
 Tel: 020 8863 5611  
 Fax: 020 8424 1040

Issued for: INFORMATION			
Revision	Details of Revision	Date	Initial
A	FOR INFORMATION	19/06/20	VK

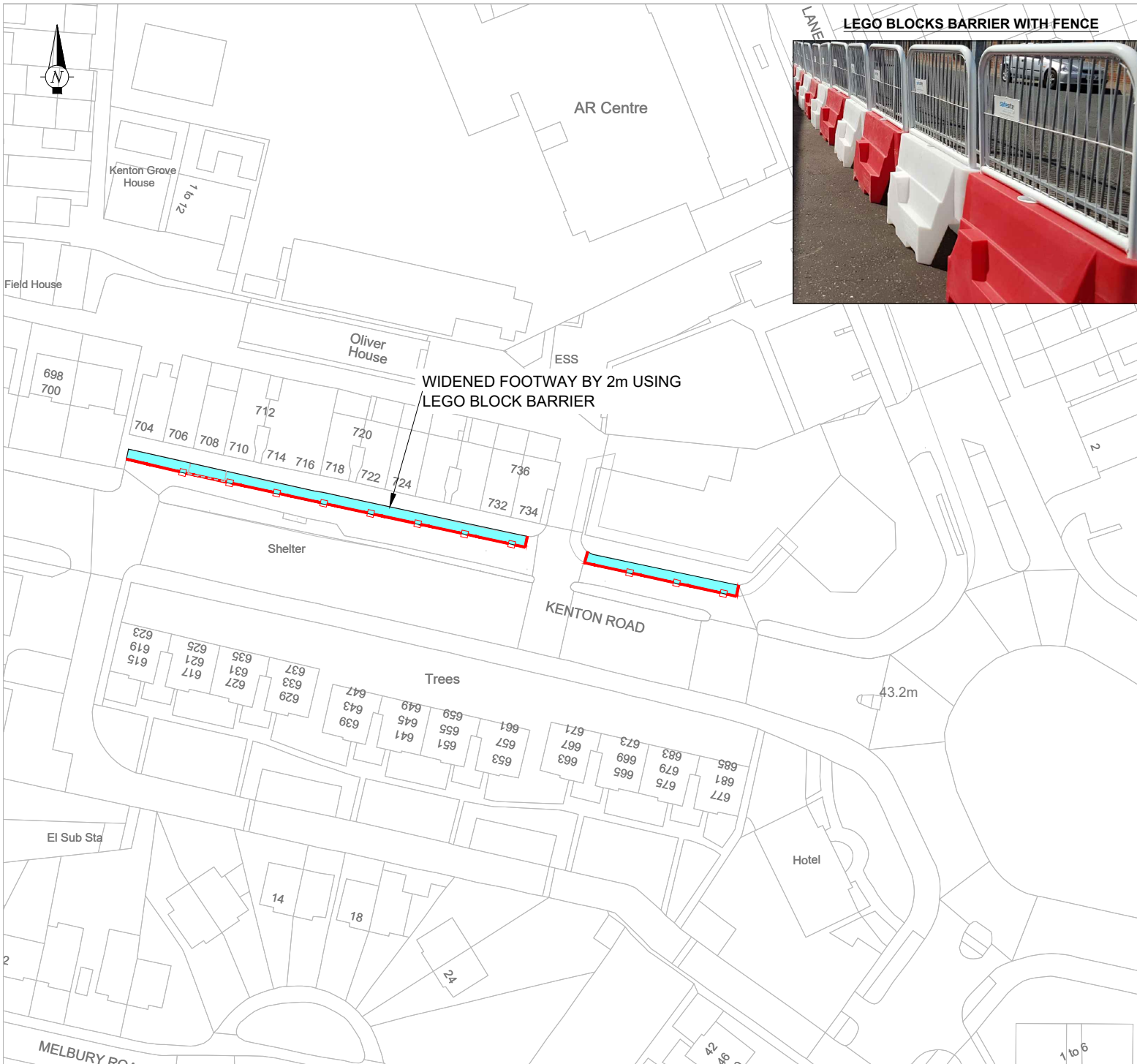
Project Title  
**LONDON STREETSPACE PROGRAMME**  
**TOWN CENTRE PEDESTRIAN SPACE**

Drawing Title  
**NORTHOLT ROAD SERVICE ROAD**  
**(NEAR PETTS HILL) SHOPPING PARADE**  
**TEMPORARY FOOTWAY WIDENING**

Scale NTS	Drawn VK	Checked JA
	Date 19/06/2020	

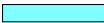

Drawing No. T/DWG/PS-09	Revision B
----------------------------	---------------

Acad file Location  
 C:\Harrow Traffic Scheme 2020\Transition programme\TPR0240\_PSDWG\PS-09.dwg



**GENERAL KEY**

GREY REPRESENTS EXISTING  
 BLACK REPRESENTS PROPOSED

 TEMPORARY FOOTWAY WIDENING AREA  
 TEMPORARY WATER FILLED LEGU BLOCKS BARRIER WITH FENCE TOP



This map is reproduced from or based upon Ordnance Survey material with the permission of Ordnance Survey on behalf of the Controller of Her Majesty's Stationery Office (C) Crown copyright. Unauthorised reproduction infringes Crown Copyright and may lead to prosecution or civil proceedings. London Borough of Harrow 100019206.



**COMMUNITY DIRECTORATE**  
**TRAFFIC, HIGHWAYS & ASSET MANAGEMENT**

P.O. Box 39, Civic Centre,  
 Harrow, Middlesex. HA1 2XA  
 Tel: 020 8863 5611  
 Fax: 020 8424 1040

Issued for: INFORMATION			
Revision	Details of Revision	Date	Initial
A	FOR INFORMATION	19/06/20	VK

Project Title  
**LONDON STREETSPACE PROGRAMME**  
**TOWN CENTRE PEDESTRIAN SPACE**

Drawing Title  
**KENTON ROAD -SERVICE ROAD**  
**NEAR KINGSBURY CIRCLE SHOPPING PARADE**  
**TEMPORARY FOOTWAY WIDENING**

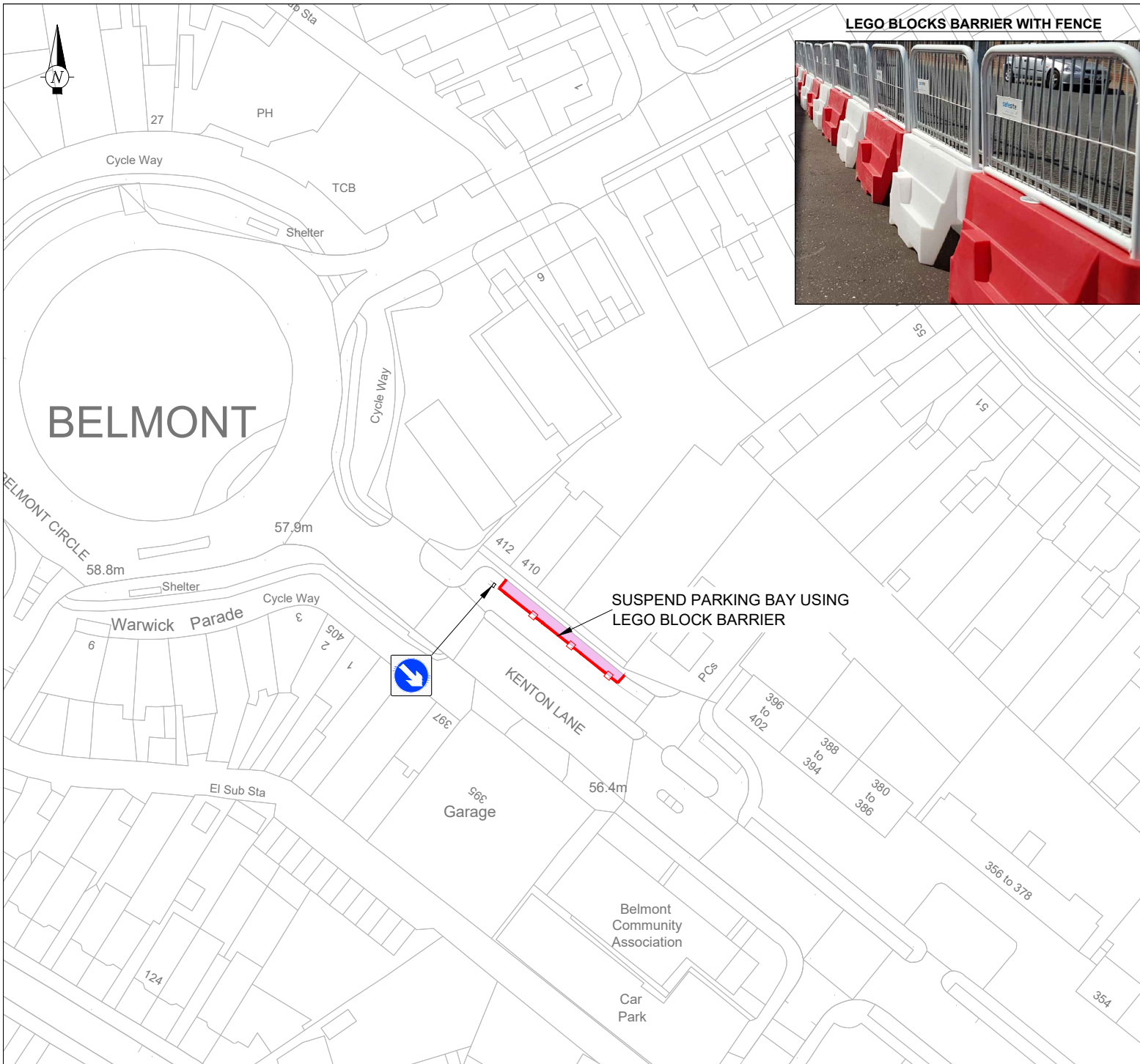
Scale NTS	Drawn VK	Checked JA
	Date 19/06/2020	

Drawing No.  
**T/DWG/KENTON ROAD PS-10**

Revision  
**A**



Acad file Location  
 C:\Harrow Traffic Scheme 2020\Transition programme\TPR0240\_PS10\DWG\PS10\_Kenton Road.DWG





**LEGO BLOCKS BARRIER WITH FENCE**

**GENERAL KEY**

- GREY REPRESENTS EXISTING
- BLACK REPRESENTS PROPOSED
-  SUSPEND PARKING BAYS
-  TEMPORARY WATER FILLED LEGO BLOCKS BARRIER WITH FENCE TOP

This map is reproduced from or based upon Ordnance Survey material with the permission of Ordnance Survey on behalf of the Controller of Her Majesty's Stationery Office (© Crown copyright. Unauthorised reproduction infringes Crown Copyright and may lead to prosecution or civil proceedings. London Borough of Harrow 100019206.



**COMMUNITY DIRECTORATE**  
**TRAFFIC, HIGHWAYS & ASSET MANAGEMENT**

P.O. Box 39, Civic Centre,  
 Harrow, Middlesex. HA1 2XA  
 Tel: 020 8863 5611  
 Fax: 020 8424 1040

Issued for: **INFORMATION**

Revision	Details of Revision	Date	Initial
A	FOR INFORMATION	19/06/20	VK

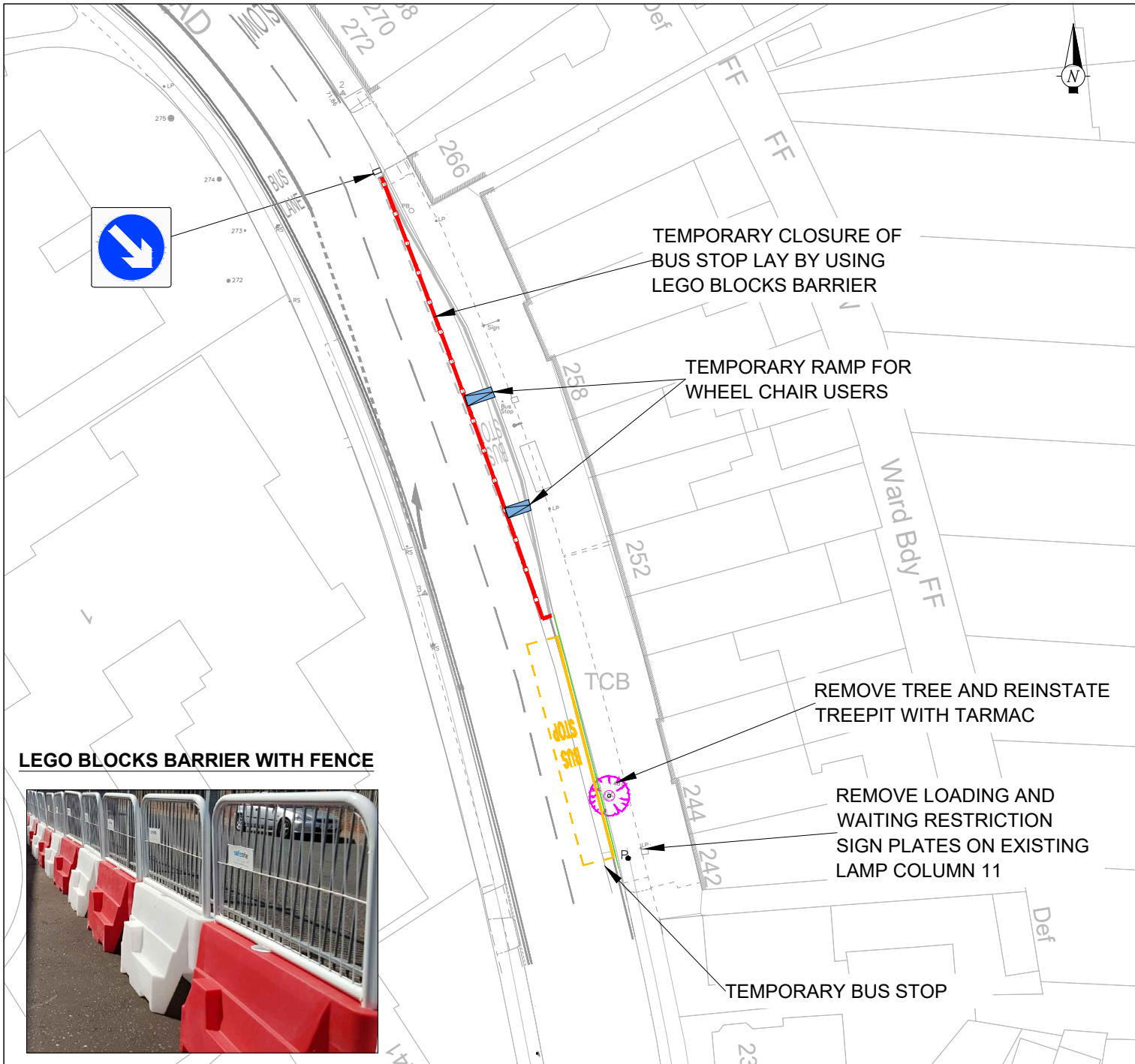
Project Title  
**LONDON STREETSPACE PROGRAMME**  
**TOWN CENTRE PEDESTRIAN SPACE**

Drawing Title  
**KENTON LANE -SERVICE ROAD**  
**NEAR BELMONT CIRCLE SHOPPING PARADE**  
**TEMPORARY FOOTWAY WIDENING**

Scale NTS	Drawn VK	Checked JA
	Date 19/06/2020	

Drawing No. T/DWG/KENTON LANE PS-11	Revision A
--	---------------

Acad file Location  
 C:\Harrow Traffic Scheme 2020\Transition programme\TPR0240\_PS\DWG\PS10\_Kenton Road.DWG



TEMPORARY CLOSURE OF BUS STOP LAY BY USING LEGO BLOCKS BARRIER

TEMPORARY RAMP FOR WHEEL CHAIR USERS

REMOVE TREE AND REINSTATE TREETPIT WITH TARMAC

REMOVE LOADING AND WAITING RESTRICTION SIGN PLATES ON EXISTING LAMP COLUMN 11

TEMPORARY BUS STOP

**LEGO BLOCKS BARRIER WITH FENCE**



**GENERAL KEY**  
 GREY REPRESENTS EXISTING  
 BLACK REPRESENTS PROPOSED

TEMPORARY WATER FILLED LEGO BLOCKS BARRIER WITH FENCE TOP

This map is reproduced from or based upon Ordnance Survey material with the permission of Ordnance Survey on behalf of the Controller of Her Majesty's Stationery Office (c) Crown copyright. Unauthorised reproduction infringes Crown Copyright and may lead to prosecution or civil proceedings. London Borough of Harrow 1000119206.

**COMMUNITY DIRECTORATE**  
 TRAFFIC, HIGHWAYS & ASSET MANAGEMENT

P.O. Box 39, Civic Centre,  
 Harrow, Middlesex. HA1 2XA  
 Tel: 020 8863 5611  
 Fax: 020 8424 1040

Issued for: INFORMATION

Revision	Details of Revision	Date	Initial
A	FOR INFORMATION	09/06/20	VK
B	FOR INFORMATION	11/06/20	VK

Project Title  
**LONDON STREETSPACE PROGRAMME SPACE AT TOWN CENTRE**

Drawing Title  
**HIGH ROAD -WL WEALD LANE BUS STOP CLOSURE TEMPORARY FOOTWAY WIDENING**

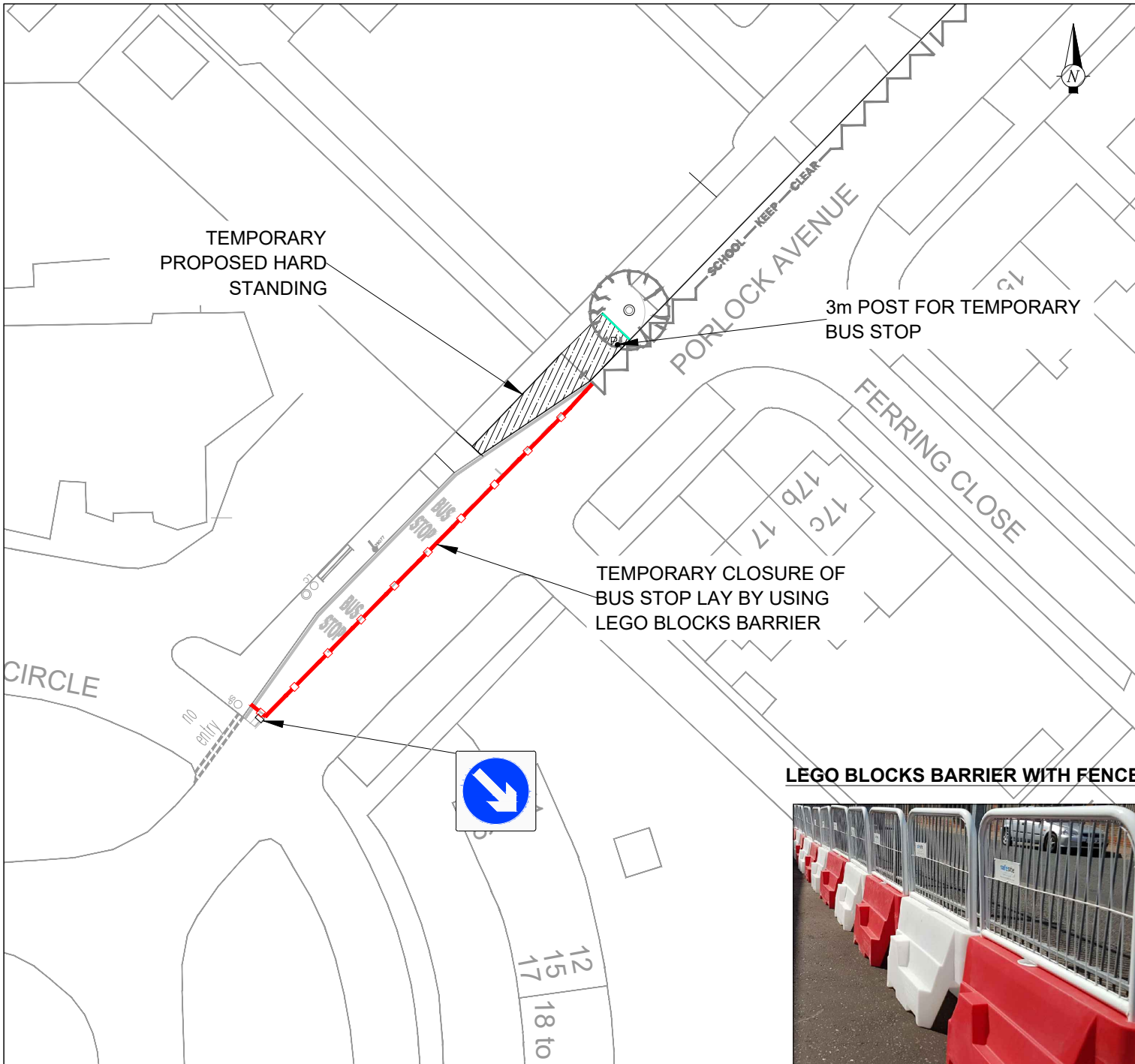
Scale NTS	Drawn VK	Checked JA
	Date 09/06/2020	

Drawing No.  
T/DWG/HIGH ROAD


Revision  
B

Acad file Location  
 C:\Harrow Traffic Scheme 2020\Transition programme\TPR0240\_PSD\DWG\PS\_Proposed Layout.dwg





**GENERAL KEY**  
 GREY REPRESENTS EXISTING  
 BLACK REPRESENTS PROPOSED

 TEMPORARY WATER FILLED LEGO BLOCKS BARRIER WITH FENCE TOP

This map is reproduced from or based upon Ordnance Survey material with the permission of Ordnance Survey on behalf of the Controller of Her Majesty's Stationery Office (c) Crown copyright. Unauthorised reproduction infringes Crown Copyright and may lead to prosecution or civil proceedings. London Borough of Harrow 100019206.



**COMMUNITY DIRECTORATE**  
 TRAFFIC, HIGHWAYS & ASSET MANAGEMENT

P.O. Box 39, Civic Centre,  
 Harrow, Middlesex, HA1 2XA  
 Tel: 020 8863 5611  
 Fax: 020 8424 1040

Issued for: INFORMATION

Revision	Details of Revision	Date	Initial
A	FOR INFORMATION	09/06/20	VK
B	FOR INFORMATION	11/06/20	VK

Project Title  
**LONDON STREETSPACE PROGRAMME  
 SPACE AT TOWN CENTRE**

Drawing Title  
**PORLOCK AVENUE  
 BUS STOP CLOSURE  
 TEMPORARY FOOTWAY WIDENING**

Scale NTS	Drawn VK	Checked JA
	Date 09/06/2020	

Drawing No.  
**T/DWG/PORLOCK ROAD**

Revision  
**B**

Acad file Location  
 C:\Harrow Traffic Scheme 2020\Transition programme\TPR0240\_PSD\DWG\PS\_Proposed Layout.dwg

**LEGO BLOCKS BARRIER WITH FENCE**

